



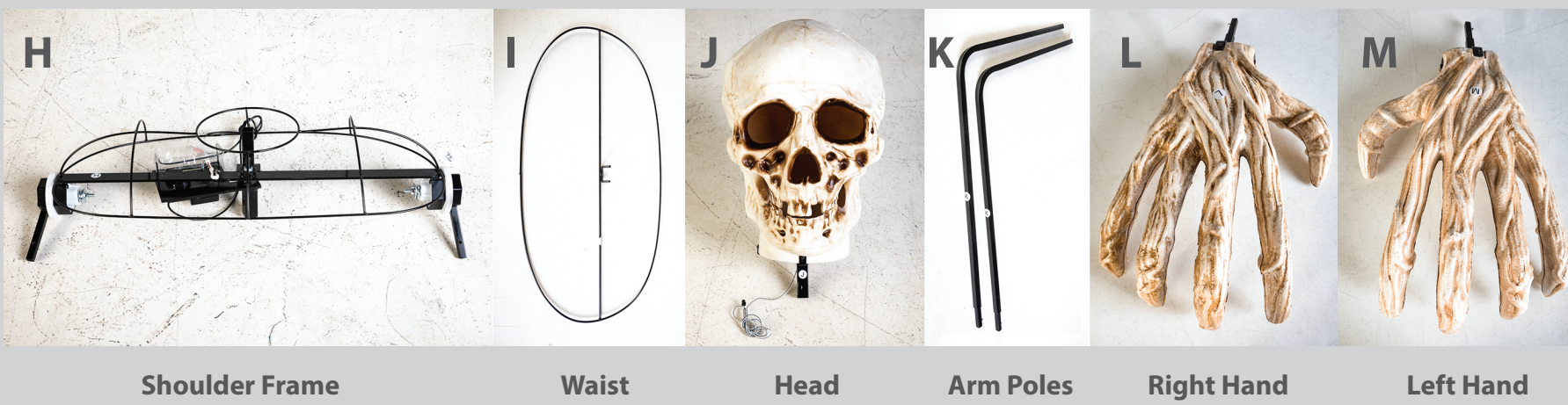
## FIRE AND ICE REAPER LIFE-SIZE ANIMATED CHARACTER

Thank you for purchasing the Life-Size Animated Fire and Ice Reaper!  
Below you'll find assembly instructions and other information to get maximum enjoyment from your purchase!

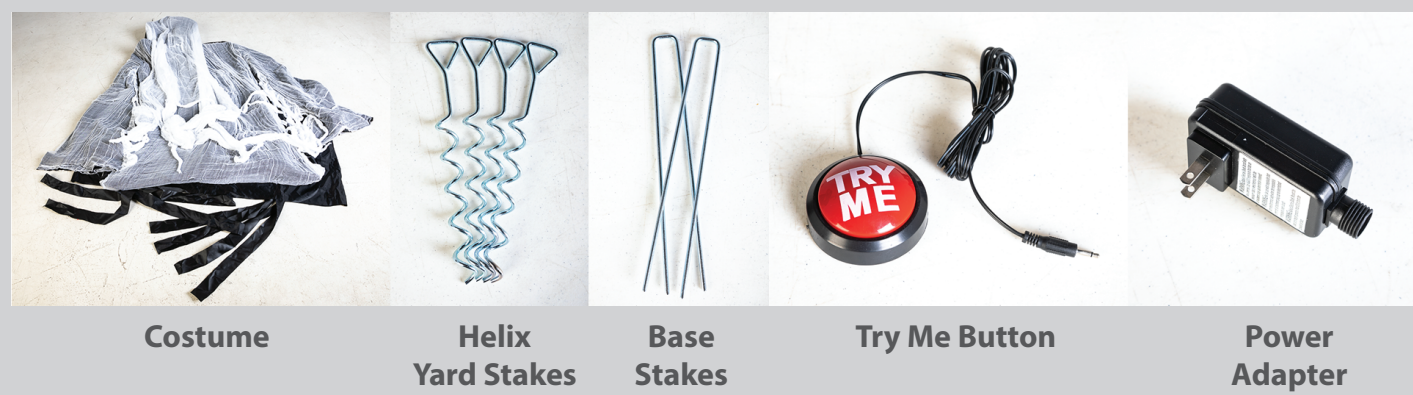
Please keep these instructions for future reference because they contain important information.

## PACKAGE CONTENTS

### LABELLED PARTS



### UNLABELED PARTS

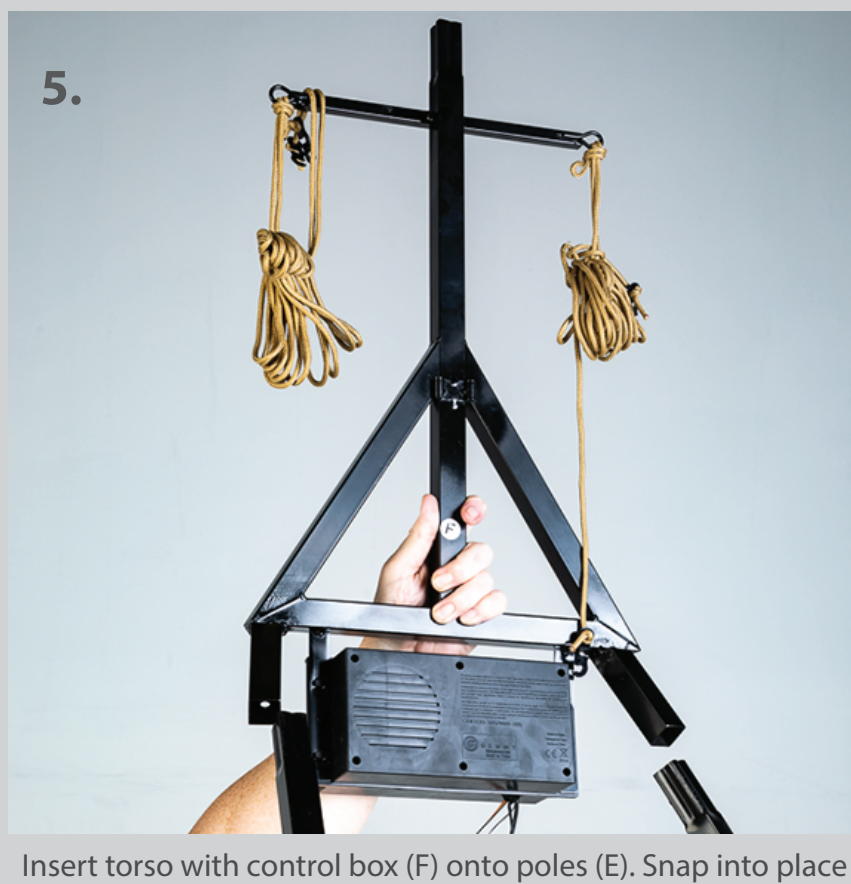
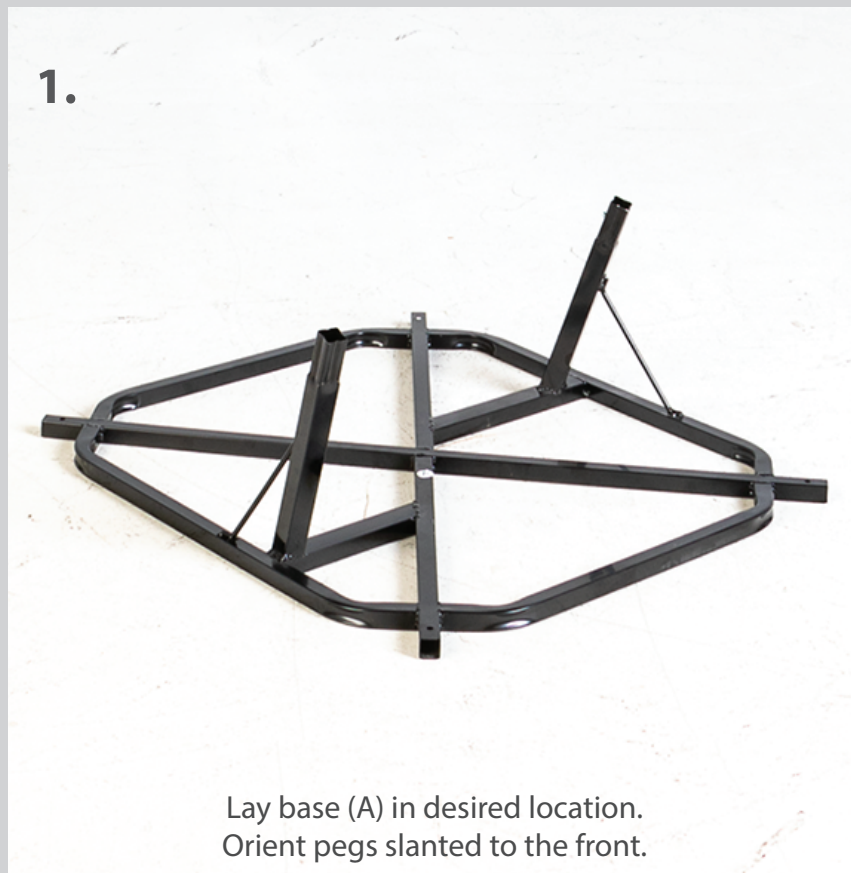


## PREPARATION

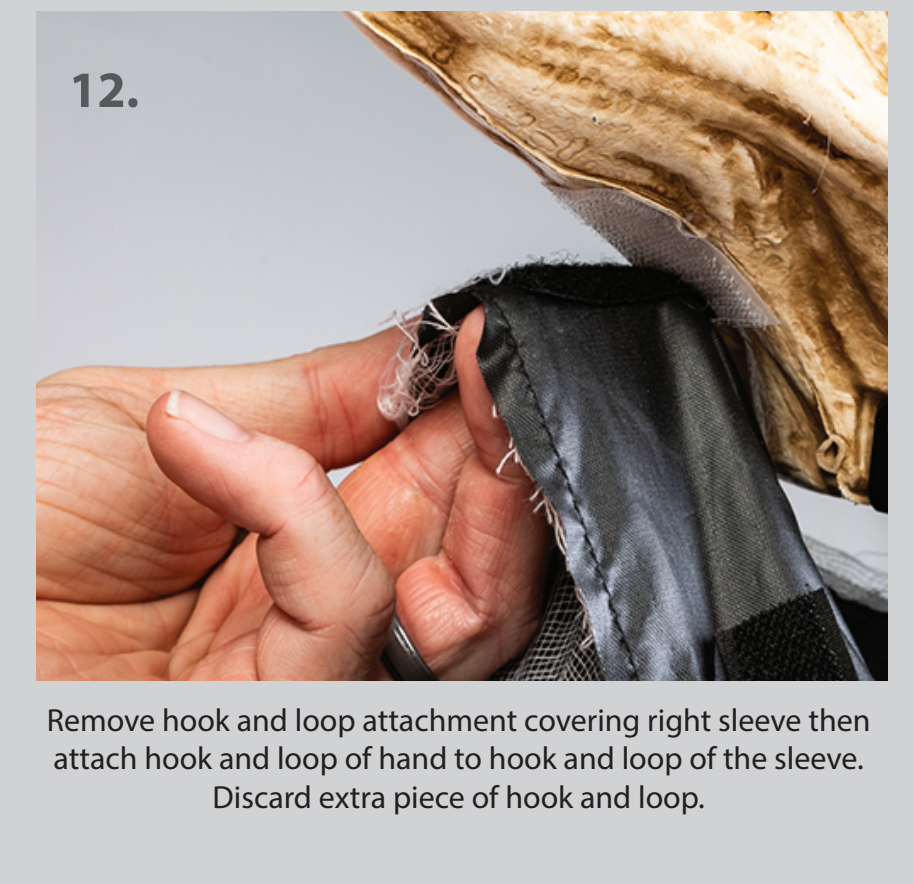
Estimated Assembly Time: 15 - 30 minutes

Before assembling the product, carefully remove all parts from the box and lay out on a flat surface.  
Make sure all parts are present. Compare parts with package contents list.  
If any part is missing or damaged, do not attempt to assemble, install or operate the product.  
Read through directions before assembling.

## ASSEMBLY INSTRUCTIONS



## ASSEMBLY INSTRUCTIONS





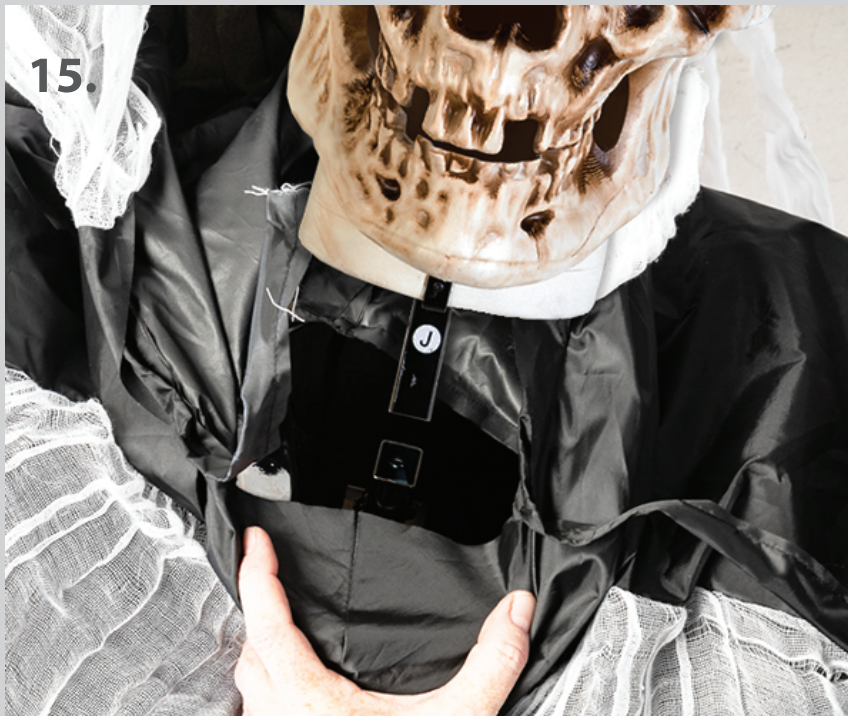
ASSEMBLY INSTRUCTIONS



13. Fold back left arm sleeve.  
Place arm pole (K) onto left shoulder.  
Place left hand (M) and snap into place.



14. Remove hook and loop attachment covering left sleeve then  
attach hook and loop of hand to hook and loop of the sleeve.  
Discard extra piece of hook and loop.



15. Open costume at the top of the frame.  
Place skull head (J) into top of torso and snap into place.



17. Connect red wire to red wire of control box.



18. Place hood of costume over skull and adjust costume.  
Tie front of hood

ASSEMBLY INSTRUCTIONS



19. Unwind the four support cords attached to torso frame.  
Thread them through the four open grommet holes on costume.



21. Place extender poles (B) in the openings on the sides of  
the base. Tie black ends of the costume to each of the  
four poles. Secure the item firmly to the ground using  
helix yard stakes, and support cords. Then secure  
the base to the ground using base stakes.



23. Plug power adaptor cord into the power adaptor plug.  
Gently lower the power adaptor to the floor  
(thread through costume first, if desired).  
Connect power adaptor to power source.



20. Stand entire frame upright. Assistance may be needed.



22. Plug the TRY ME button into the corresponding  
hole of the control box. Gently place the button  
on the floor (thread through costume first, if desired).



24. Make final adjustments to clothing, as needed.

ANIMATION FUNCTIONALITY

The Life-Size Animated Dapper Skeleton has the following operational settings on the torso with control box:

MAIN SWITCH:

- SENSOR SETTING: Switch to "SENSOR" position to turn on sound and motion activation.
- OFF SETTING: Switch to "OFF" position to turn off sound and motion activation.

Figure now operates with push-button activation only using the TRY ME button.

VOLUME: UP/DOWN CONTROL KNOB

STORAGE

Do not discard box as it should be used for storage.  
Return all parts to the original packaging. Store in a cool, dry location.

SAFETY WARNINGS

Remove all plastic fasteners and tags. These are part of the packaging and should be discarded.  
For indoor use only. This item is not a toy and should be used for decorative purposes only.

WARNING

This device complies with Part 15 of the FCC Rules. Operation is subject to the following two conditions:

- (1) this device may not cause interference
- (2) this device must accept any interference, including interference that may cause undesired operation of the device.

CAUTION: Changes or modifications not expressly approved by the party responsible for compliance  
could void the user's authority to operate the equipment.

NOTE: This equipment has been tested and found to comply with the limits  
or a Class B digital device, pursuant to Part 15 of the FCC Rules.

These limits are designed to provide reasonable protection against harmful interference  
in a residential installation. This equipment generates, uses, and can radiate radio frequency energy and,  
if not installed and used in accordance with the instructions, may cause harmful interference  
to radio communications. However, there is no guarantee that interference will not occur  
in a particular installation. If this equipment does cause harmful interference to radio or television reception,  
which can be determined by turning the equipment off and on, the user is encouraged to  
try to correct the interference by one or more of the following measures:

- Reorient or relocate the receiving antenna.
- Increase the distance between the equipment and receiver.
- Connect the equipment into an outlet on a circuit different from that to which the receiver is connected.
- Consult the dealer or an experienced radio/TV technician for help.

THESE INSTRUCTIONS APPLY TO THE FOLLOWING ITEM NUMBER  
229689

[gemmy.com/product-assembly/](http://gemmy.com/product-assembly/)

